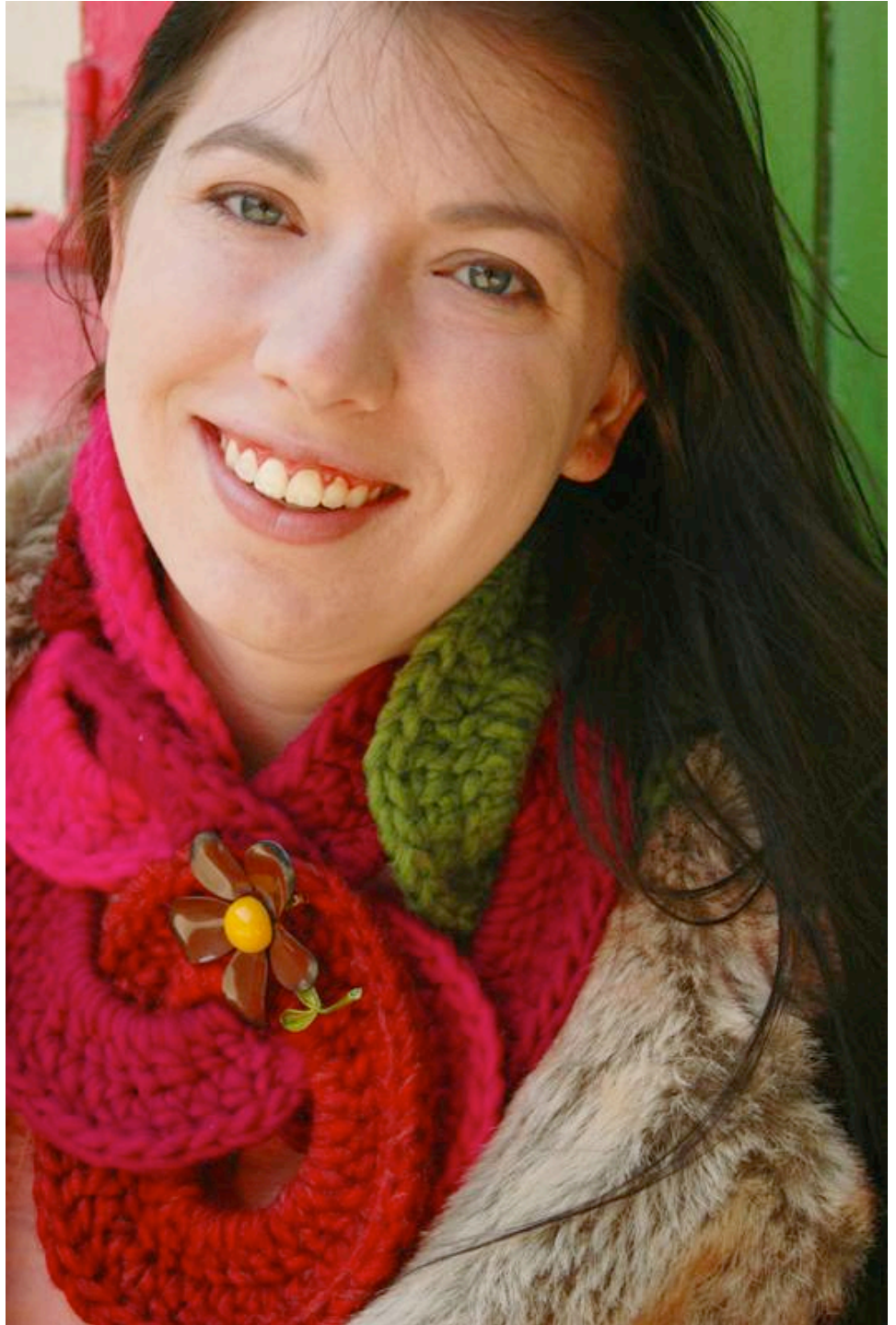




Tangledness.com

RINGO BY SANDY LEHMAN

Ringo is made up of interlocking circles to create a chain. Each ring is crocheted through the previous one, so there is no assembly required; just a few stitches to tack the circles in place. Close with a vintage pin or make the cowl scarf length simply by joining more rings.



CRAFT

Crochet

DIFFICULTY

Beginner

MATERIALS

Yarn – Brown Sheep Co Burly Spun (100% wool; 130 yd [119 m]/3 oz [56 gm]; CYCA 6): #BS38 lotus pink (A), #BS23 fuchsia (B), #BS191 kiwi (C), #BS181 prairie fire (D), #BS101 bing cherry (E) 1 skein each.

Hook – Size K (6.5 mm). Adjust hook size if necessary to obtain correct gauge.

Notions – a tapestry needle

GAUGE

11 dc and 4 rows = 4”, unblocked. Each ring should measure 5.5” in diameter.

AVAILABLE SIZES

One size

MEASUREMENTS

5” wide and 27.5” long

INSTRUCTIONS

CIRCLE MOTIF

Note: work colors in sequence from A to D, or as desired.

Circle 1:

With color A ch 20, sl st in beg ch to form ring, being careful not to twist ch.

Rnd 1: Ch3 (counts as 1st dc), 31 dc in ring, sl st in beg dc to join, do not turn here and throughout (32 dc).

Rnd 2: Ch3 (counts as 1st dc), dc in same st, dc in next 3 dc, *2 dc in next dc, dc in next 3 dc; rep from * around, sl st in beg dc to join (40 dc).

Fasten off, leaving a 10 inch tail.

Circles 2-8:

With color of choice, ch 20, insert beginning of chain from underneath to front through center of previous ring. Sl st in beg ch to join, being careful not to twist ch.

Rnd 1: Ch3 (counts as 1st dc), 31 dc in ring, rotating ring as necessary to work each st, sl st in beg dc to Join (32 dc).

Rnd 2: Ch3 (counts as 1st dc), dc in same st, dc in next 3 dc, *2 dc in next dc, dc in next 3 dc; repeat from * around, rotating ring as necessary to work each st, sl st in beg dc to join (40 dc).

Fasten off, leaving a 10 inch tail.

FINISHING

Lay the cowl flat and arrange the circles to desired shape. Use the tails to tack each circle into place. Weave in ends, block if necessary according to yarn label instructions.

Original design by **Sandy Lehman**

Sandy Lehman created Pea Pod Crochet & Co. as an outlet for her fun crocheted hats and other hand-crafted items. Her crochet and knit designs can be found here at Tangled, on Ravelry, and soon at knitpicks.com. Visit her web site peapodcrochet.com, or find her on Ravelry as [peapodcrochet](#).

It is of the utmost importance to Tangled to provide accurate and well-written patterns. All Tangled patterns have been carefully edited for errors. If you think you may have found a mistake or need assistance with this design please contact Team Tangled at support@tangledness.com.

This pattern is copyright 2010 by Sandy Lehman and may not be distributed in any way.

Photos by Brittany Tyler